



WORLDWIDE WHERE SAFETY IS SUCCESS.™

8800 Roswell Rd. | Suite 145

1 800 691 6601

info@strataproducts.com

Sandy Springs, GA 30350 USA

strataworldwide.com

## Supplemental Fresh Air Bay Deployment Procedures

**Purpose:** These procedures have been developed to mitigate potential leaks in the tubes and canopy of the Strata FAB (Fresh Air Bay) refuge alternative.

**Scope:** These procedures apply to all Strata FAB models & to the structural integrity of the tent ONLY. **Breathing Air, Harmful Gas and Air Monitoring systems are NOT impacted.**

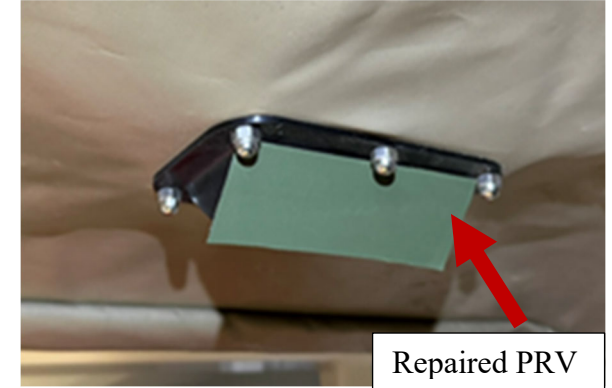
**Location:** These procedures must be placed in the MX6 Battery Case.

**Duration:** Strata is developing a long-term solution for these refuge alternatives. These instructions must remain in the refuge alternative until further notice.

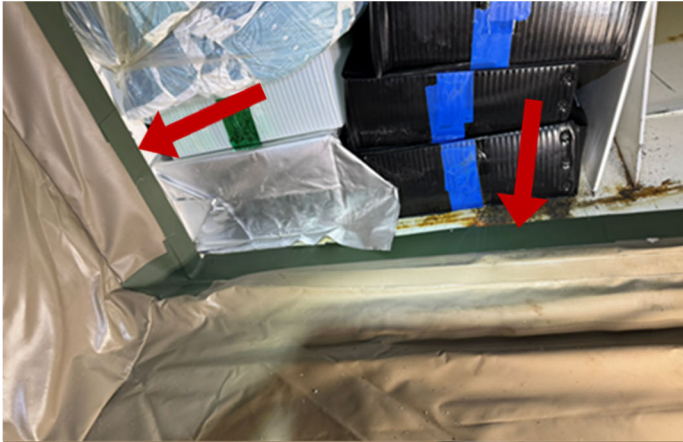
### Supplemental Procedures

- 1- Deploy the Strata Fresh Air Bay normally as stated in the current user manual: **SS1000-REV02, Fresh Air Bay (FAB) User Guide.**
- 2- After deployment, entry, and activation of the Strata Fresh Air Bay, the additional following procedures should be implemented:

- a. To eliminate the potential for canopy air to leak from the two canopy PRVs (Pressure Relief Valve), use the scissors in the Tent Repair Kit to cut a square of the self-adhesive tent patch material (green material) large enough to cover each of the Tent Canopy PRVs. The material should be applied in a manner that closes off the face of the PRVs. The 2 PRVs are overhead in the neck of the tent.



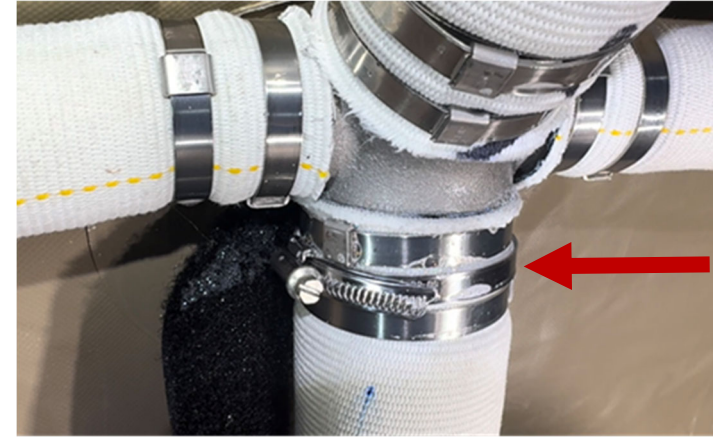
- b. To minimize potential leaks where the tent material connects to the steel flange and the steel box, cut several strips, approximately 2" wide, of the tent patch material and apply as shown in the photos below. Check the adhesive strips occasionally to make sure they remain in place.



3

REV 00

- c. After completing all deployment procedures, listen for potential leaks at each point where the support tubes connect to the fittings.



- d. If there are significant leaks where the tubes connect to the fittings, they may be evidenced by the hissing sound of escaping air. If such a leak is found, it can be repaired by applying a spare worm gear clamp, taken from the tent repair kit in the Duffle Bag. Make sure the center of the worm gear clamp rests on the peak of the ridge all the way around between the two existing clamps as you tighten.
- e. Using the screwdriver from the duffle bag, tighten the clamp securely. This should minimize or eliminate the leak.

4

REV 00

- f. If the tubes show signs of pressure loss (buckling or sagging), add air from time to time using the pump provided in the duffle bag. See the image below indicating the location of the tube fill location.



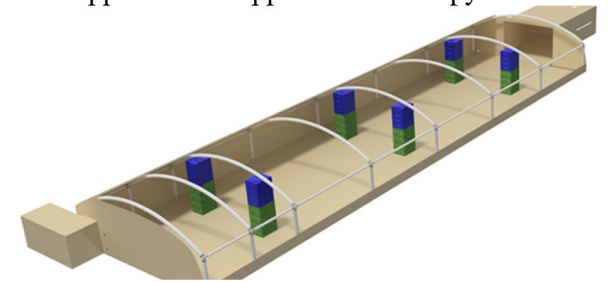
Below is an image of the pump:



Strata recommends that you connect the hand pump every 8 hours to evaluate the tube pressure and add extra air if necessary. Air should be added to the tubes when it drops below 40 PSI. Enough air should be added to return the tube pressure to 50 PSI or more. The pump includes a pressure gauge that can be used to determine the tube pressure.

NOTE: Adding 10 PSI to the tubes can take as long as 10 minutes.

- 3- Leftover purge air can also be added to support the tent canopy. To add purge air, fully open the door between the airlock and main chamber. Open the Purge Valve to release purge air into the tent. Do not over-inflate the tent. The tent is over-inflated if the canopy billows upward or the legs are lifted off the ground. Strata recommends that you open the purge air valve for approximately 60 seconds at 24-hour intervals after entering the refuge alternative. If air remains in the purge system after the 72-hour interval, it can be released by holding the valve open until the flow subsides.
- 4- After completing the above steps, cartridges of soda lime, full cases of food/water may also be stacked as shown below to offer supplemental support to the canopy.



**CAUTION!!**

- 1- DO NOT allow the tent door to the mine atmosphere to remain open. Following each purge cycle during entry, close the door tightly to conserve canopy air.
- 2- DO NOT bring cribbing or other foreign materials into the tent to use as support or for any other purpose. These items may puncture the tent fabric and allow air to escape or harmful gas from the mine atmosphere to enter the tent.
- 3- Do not waste Purge Air. As stated in the **SS1000-REV02, Fresh Air Bay (FAB) User Guide**: “If the carbon monoxide or CO reading is below 75 parts per million, the methane is below 1% and the oxygen level is above 19.5 percent”, it is not necessary to purge the airlock.
- 4- Do NOT allow the tent door to become blocked in a manner that would prevent the tent from being deployed.